



# ORMANITE

FRENCH LEADER IN PREFABRICATED BATHROOMS 



Pictures shown are for illustration purpose only



## Technical informations :

- Height = 2,15m
- Weight = 450kg
- Interior area = 3,35m<sup>2</sup>
- Door of 90cm

\*The dimensions take into account the thickness of the exterior cladding: EXCLUDING BAUDET SERVICES

[www.baudet-sa.com](http://www.baudet-sa.com) 



ORMANITE



## Structure

- GRP Structure
- Pod finish : gloss appearance
- Floor : free standing resin concrete non-slip finish in the shower area
- Integrated shower tray
- Vinyl floor finish in the dry area (basin and WC)
- Sealing between the wall provided by a compressed foam

## Colour chart

Choose between the 2 compositions !

### GEL COAT WALL FINISH

### POSSIBLE SHOWER WALL COLOURS



RAL 9016  
Code BAUDET 901



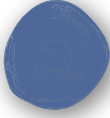
RAL 7047  
Code BAUDET 739



RAL 3012  
Code BAUDET 326



RAL 6019  
Code BAUDET 640



RAL 5014  
Code BAUDET 547

### GEL COAT WALL FINISH

### POSSIBLE COLOURS FOR TOILET AND BASIN WALLS



RAL 9016  
Code BAUDET 901



RAL 7047  
Code BAUDET 739

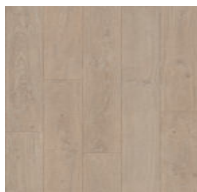
### GEL COAT FLOOR FINISH



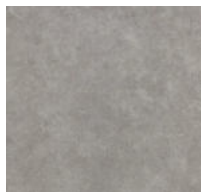
RAL 7047  
Code BAUDET 739

### ADDED VALUE OPTION - VINYL FLOOR\* OUT OF THE SHOWER AREA

\*The floor finish is white out of the vinyl floor



SURESTEP WOOD  
ELEGANT OAK  
Code BAUDET 870



SURESTEP STONE  
BLUE CONCRETE  
Code BAUDET 771



SURESTEP STONE  
BLACK CONCRETE  
Code BAUDET 951

## Handings

Our bathrooms can be easily adapted to the layout of your room.



OPTION 01



OPTION 02



OPTION 03



OPTION 04

## Equipment

### DOOR

- White lacquered door frame
- White laminate hinged door
- Standard door lock
- 1 double oblique hook

### BASIN

- Concrete washbasin, white gel coat finish
- Towel hanging cut in the front of the basin
- Basin mixer
- Mirror

### SHOWER

- Shower set including flexible hose, head and soap dish
- Shower mixer
- Shower curtain mounted on aluminium rail
- 2 straight grab rails
- 1 decorative panel

### TOILET

- Wall hung toilet pan and white seat
- Cistern with white dual flush panel
- 1 toilet roll holder
- 1 folding grab rail
- 1 decorative panel

### ELECTRICITY (adapted to local regulations)

- Power or shaver socket
- 3 IP65 LED spots connected to the junction box
- Earth cable section 6 mm<sup>2</sup>
- Drilling for vent grill Ø 127 mm

### WATER SUPPLY & WASTE PIPES

- Hot and cold water multilayer pipe with insulation, connected to 1/2"
- Basin and shower waste pipes - PVC Ø 40
- Toilet waste pipe - PVC Ø 100

### UK STANDARDS

- Basin waste pipes - PVC Ø 36
- Shower waste pipes - PVC Ø 42
- Toilet waste pipe - PVC Ø 110