



ECLA P

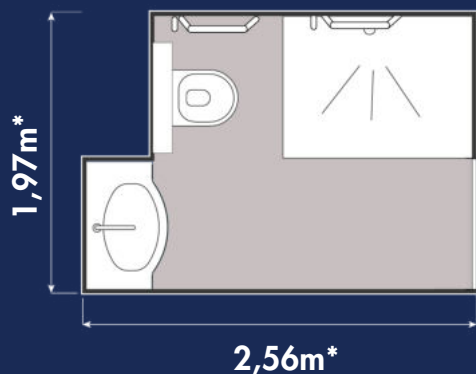
FRENCH LEADER IN PREFABRICATED BATHROOMS 



Picture shown are for illustration purpose only



▶ THE BATHROOM'S VIDEO



Technical informations :

- Height = 2,25m
- Weight = 450kg
- Interior area = 3,75m²
- Door of 90cm

*The dimensions take into account the thickness of the exterior cladding: EXCLUDING BAUDET SERVICES



ECLA P



Structure

- GRP Structure
- Pod finish : gloss appearance
- Floor : free standing GRP floor with non-slip surface in the shower area
- Integrated shower tray, floor in one piece
- Vinyl floor finish in the dry area (basin and WC)
- Sealing between the wall provided by a compressed foam

Colour chart

Choose between the 2 compositions !

GEL COAT WALL FINISH

POSSIBLE SHOWER WALL COLOURS

COMPOSITION 1



RAL 9016
Code BAUDET 901



RAL 7047
Code BAUDET 739



RAL 3012
Code BAUDET 326



RAL 6019
Code BAUDET 640



RAL 5014
Code BAUDET 547

GEL COAT WALL FINISH

POSSIBLE COLOURS FOR TOILET AND BASIN WALLS

COMPOSITION 2



RAL 9016
Code BAUDET 901



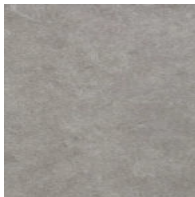
RAL 7047
Code BAUDET 739

VINYL FLOOR* OUT OF THE SHOWER AREA

*The floor finish is white out of the vinyl floor



SURESTEP WOOD
ELEGANT OAK
Code BAUDET 870



SURESTEP STONE
BLUE CONCRETE
Code BAUDET 771



SURESTEP STONE
BLACK CONCRETE
Code BAUDET 951

Features

DOOR

- White lacquered metal door frame
- Tubular core door, white laminate
- Standard door handle with indicator
- 1 double robe hook

BASIN

- Concrete washbasin, white gel coat finish with towel holder cut-out the front side of the basin
- Basin mixer
- Mirror

SHOWER

- Shower set including flexible hose, head and soap dish
- Shower mixer
- Shower curtain mounted on aluminium rail
- 2 straights grab rails

TOILET

- Wall hung toilet pan and white seat
- Cistern with white dual flush panel
- 1 toilet roll holder
- 2 straights fixed grab rails

ELECTRICITY (adapted to local regulations)

- Power or shaver socket
- 3 IP65 LED spots connected to the junction box
- Earth cable section 6 mm²
- Drilling for vent grill Ø 127 mm

WATER SUPPLY & WASTE PIPES

- Hot and cold water multilayer pipe with insulation, connected to 1/2 "
- Basin and shower waste pipes - PVC Ø 40
- Toilet waste pipe - PVC Ø 100

UK STANDARDS

- Basin waste pipes - PVC Ø 36
- Shower waste pipes - PVC Ø 42
- Toilet waste pipe - PVC Ø 110

Handings

Our bathrooms can be easily adapted to the layout of your room.



OPTION 01



OPTION 02



OPTION 03



OPTION 04

Bathroom compatible with the
to improve
the working conditions of caregivers and
the living conditions of residents



This document is not contractual. It is produced for general information only.