



# NORIA

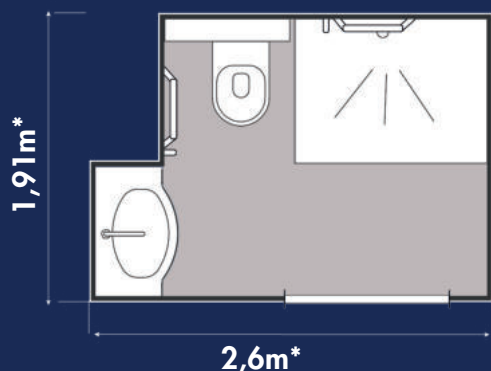
FRENCH LEADER IN PREFABRICATED BATHROOMS 



Picture shown are for illustration purpose only



▶ THE BATHROOM'S VIDEO



## Bathroom technical information :

- Height= 2,30m
- Weight = 450kg
- Interior area = 3,85m<sup>2</sup>
- Door of 90cm

\*The dimensions take into account the thickness of the exterior cladding: EXCLUDING BAUDET SERVICES

[www.baudet-sa.com](http://www.baudet-sa.com)





# NORIA



## Structure

- GRP Structure
- Pod finish : gloss appearance
- Floor : free standing GRP floor with non-slip surface in the shower area
- Integrated shower tray, floor in one piece
- Vinyl floor finish in the dry area (basin and WC)
- Sealing between the wall provided by a compressed foam

## Colour chart

Choose between the 2 compositions !

### GEL COAT WALL FINISH

COMPOSITION 1



RAL 9016  
Code BAUDET 901

### POSSIBLE SHOWER WALL COLOURS



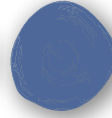
RAL 7047  
Code BAUDET 739



RAL 3012  
Code BAUDET 326



RAL 6019  
Code BAUDET 640



RAL 5014  
Code BAUDET 547

### GEL COAT WALL FINISH

COMPOSITION 2



RAL 9016  
Code BAUDET 901

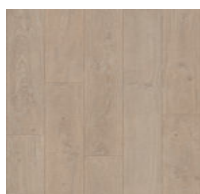
### POSSIBLE COLOURS FOR TOILET AND BASIN WALLS



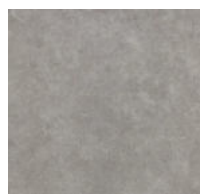
RAL 7047  
Code BAUDET 739

### VINYL FLOOR\* OUT OF THE SHOWER AREA

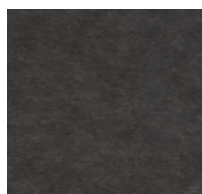
\*The floor finish is white out of the vinyl floor



SURESTEP WOOD  
ELEGANT OAK  
Code BAUDET 870



SURESTEP STONE  
BLUE CONCRETE  
Code BAUDET 771



SURESTEP STONE  
BLACK CONCRETE  
Code BAUDET 951

## Equipment

### DOOR

- White lacquered metallic door frame
- Tubular core door, white laminate
- Standard door handle with indicator
- Pull bar on door (except if sliding door)
- 1 double robe hook

### BASIN

- Basin mixer
- Mirror
- Concrete washbasin, white gel coat finish with towel holder cut-out on the front side of the basin

### SHOWER

- Shower set including flexible hose, head and soap dish
- Shower mixer
- Shower curtain mounted on aluminium rail
- 2 straights grab rails

### TOILET

- Wall hung toilet pan and white seat
- Cistern with white dual flush panel
- 1 toilet roll holder
- 2 straights fixed grab rails
- Removable shelf for easy toilet cistern access

### ELECTRICITY (adapted to local regulations)

- Power or shaver socket
- 3 IP65 LED spots connected to the junction box
- Earth cable section 6 mm<sup>2</sup>
- Drilling for vent grill Ø 127 mm

### WATER SUPPLY & WASTE PIPES

- Hot and cold water multilayer pipe with insulation, connected to 1/2 "
- Basin and shower waste pipes - PVC Ø 40
- Toilet waste pipe - PVC Ø 100

### UK STANDARDS

- Basin waste pipes - PVC Ø 36
- Shower waste pipes - PVC Ø 42
- Toilet waste pipe - PVC Ø 110

Bathroom compatible with the  
to improve  
the working conditions of caregivers and  
the living conditions of residents



This document is not contractual. It is produced for general information only.

## Handings

Our bathrooms can be easily adapted to the layout of your room.



OPTION 01



OPTION 02



OPTION 03



OPTION 04