

Innovative bathroom solutions



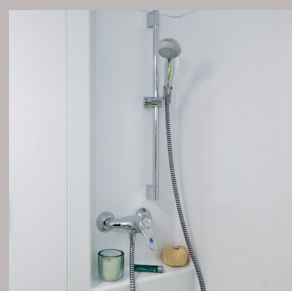
# ONYX

MADE IN FRANCE

Sector :  
**STUDENT ACCOMMODATIONS**

## Why choose a BAUDET bathroom ?

- Single point of contact
- Controlled costs and reduced build time
- Optimisation of surfaces
- Speed of installation
- Perfect sealing
- Optimum hygiene
- Aftercare / Snagging
- Dedicated after sales support



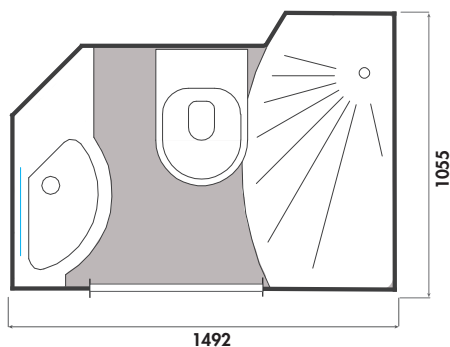
\* Non-contractual photos

*Ultra-compact*

### Dimensions

Length = 1 492 mm  
Width = 1 055 mm  
Height = 2 260 mm

Surface int. = 1,10 m<sup>2</sup>  
Weight = 150 kg  
Door of 600 mm



**The Onyx model is the ideal solution for new build or renovation projects.**

### Our Accreditations



Technical advice  
CSTB n° 9/15-1019



NFC-15 100

Discover our range at [www.baudet-sa.com](http://www.baudet-sa.com)



BAUDET INITIAL

ONYX

MADE IN FRANCE 

## Features

### DOOR

- Door frame lacquered white
- Lacquered hinge door (width of 600 mm)
- Stainless steel bracket at the bottom
- Lever door lock
- 1 robe hook

### BASIN

- Concrete resin basin with a gel coat finish
- Mixer tap
- Waste
- Mirror
- Towel rail

### SHOWER

- Bar valve incorporating flexible hose, head and soap dish
- Shower mixer
- Shower curtain mounted on aluminium rail
- Storage shelf

### WC

- WC wall hung
- Double seat thermoset (white)
- 1 toilet roll holder
- Cistern dual flush 3/6 L
- White flush panel

## Structure

- GRP structure
- Pod finish : gloss appearance
- Anti-slip polyester self-supporting concrete floor on pedestals (bathroom entry: 16 cm)
- Integrated shower tray
- Seal between the walls provided by a compressed foam seal

## Connections

### ELECTRICITY

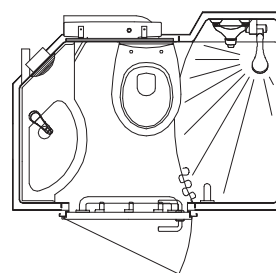
- Plug
- IP65 2 LED spot lights
- Earthing: cable section 6 mm<sup>2</sup>
- VMC self-adjusting 30 m<sup>3</sup> /h – Ø 125 mm
- Access via a removable hatch located in the wall

### WASTE / SUPPLY

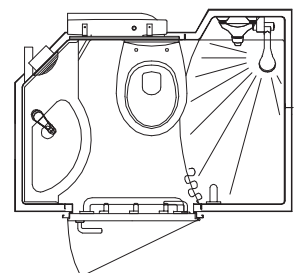
- Hot/ Cold multilayered, pex pipe with crimped connections to 1/2"
- Basin and shower waste PVC Ø40
- WC waste in PVC Ø100
- Access via a removable hatch located in the wall

## Handing

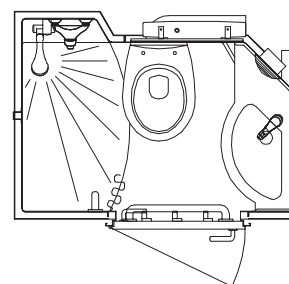
Our bathrooms are adapted to the configuration of your space.



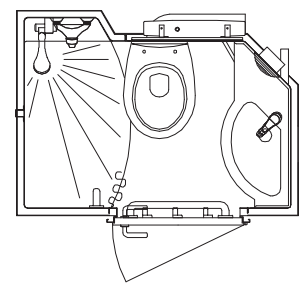
Option 01



Option 02



Option 03



Option 04

## Note

The installation of our bathrooms requires services in place prior to delivery, these are not included by Baudet.

- Our bathroom are designed to be cladded with standard plasterboard (BA 13mm)
- Electricity supply on site must provide a cable for lighting and for a light switch
- Plumbing has to be ready for connections including isolation valves.
- The floor surface to receive the pod has to be prepared according BAUDET's recommandations, also the recess, drilling and refilling of the floor.

\*This document is not contractual. It is produced for general information only.

Tel. +33(0)2 51 66 27 85  
Fax +33(0)2 51 66 27 63  
contact@baudet-sa.com

Discover our range at [www.baudet-sa.com](http://www.baudet-sa.com)